

Children and Young Person's Scrutiny Panel

9th February 2022

Page 7

Dr Dagmar Zeuner, Director of Public Health

Merton Public Health Intelligence

27th January 2022

Enquiries: amira.yunusa@merton.gov.uk



Agenda Item 4

Summary of COVID cases, PCR testing, deaths, vaccinations and inpatient statistics

Domain	Indicator	Merton (previous 7 days)	Merton change	London (previous 7 days)	London Change
Regional marker	R value (14 th January)	-	-	0.7 to 1.1 (0.9 – 1.2)	↓
Cases over last week (8 th – 14 th Jan)	New cases (week ending 14 th Jan)	1,802 (2,562)	↓	67,340 (105,018)	↓
	7 day case rates per 100,000	984.7 (1,604.7)	↓	897.7 (1,550)	↓
	Case rate in young people (0-29 years) per 100,000 (16 th Jan – 22 nd Jan)	1,252.7 (1,043.7)	↑	4,350.9 (4,570.4)	↓
Pillar 1 & 2 PCR tests over 7 days (23rd – 29th Dec)	Number of people tested	13,037 (21,202)	↓	565,085 (895,470)	↓
	Test positivity %*	32.8% (24.4%)	↑	31.5% (23.1%)	↑
	Testing rates are highest in 19-24 years (20 th Jan – 26 th Jan)	5,987.1 (19,567.3)	↓	N/A	---
	Testing rates are lowest in 0-4 years (20 th Jan – 26 th Jan)	2567.9 (5987.1)	↓	N/A	---
8 Deaths (1st – 7th Jan)	Number of COVID-19 registered deaths	1 (3)	↓	171 (110)	↑
Vaccinations (as of 18th Jan)**	Vaccine uptake in 50+ year olds (% who have had 3 doses)	70.8% (70.4%)	↑	68.5% (68.0%)	↑
	Vaccine uptake in 12-15 year olds (% who have had at least 1 dose)	46.4% (45.9%)	↑	40.5% (34.8%)	↑
	Vaccine uptake in 16-17 year olds (% who have had at least 2 doses)	41.4% (40.7%)	↑	33.3% (32.4%)	↑
	Vaccine uptake in 18-24 year olds (% who have had 3 doses)	27.2% (25.8%)	↑	21.9% (20.4%)	↑
Current inpatients in SWL hospitals (as of 11 th January)	COVID inpatients	584 (567)	↑	3,826 (3,993)	↓
	COVID patients in mechanical ventilator beds	22 (32)	↓	219 (245)	↓

Please note: reporting periods are based on the latest data available from different sources.

*Test positivity refers to the percent of people that tested positive, therefore if someone had multiple tests or tested positive multiple times in a reporting week they are only counted once.

**Denominator based on NIMS population.

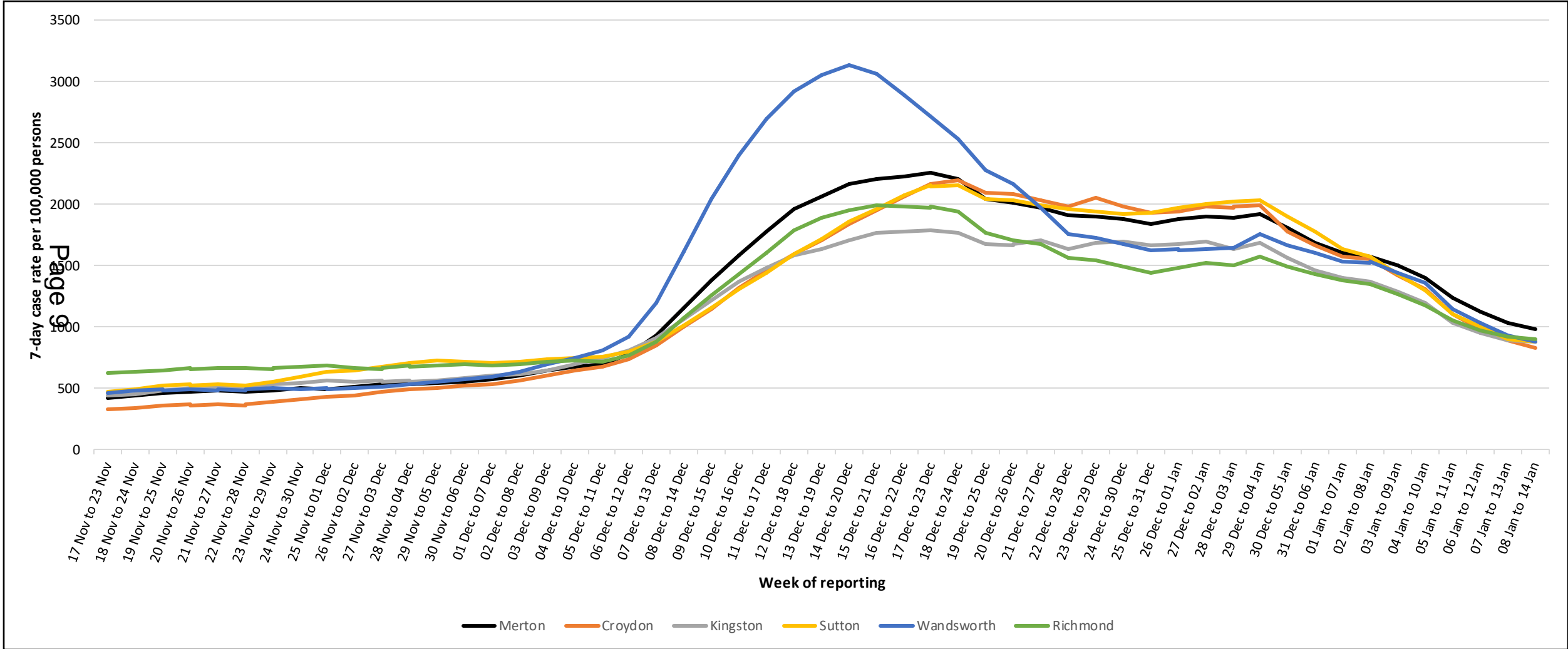
Data as of 27th Jan; contains public sector information licensed under the Open Government Licence v3.0.

Rolling 7-day case rate per 100,000 people in Merton compared to SW London boroughs

Source: Coronavirus (COVID-19) in the UK (<https://coronavirus.data.gov.uk/>)

Reporting frequency: Daily

Key message: Merton has the highest rate among SW London boroughs



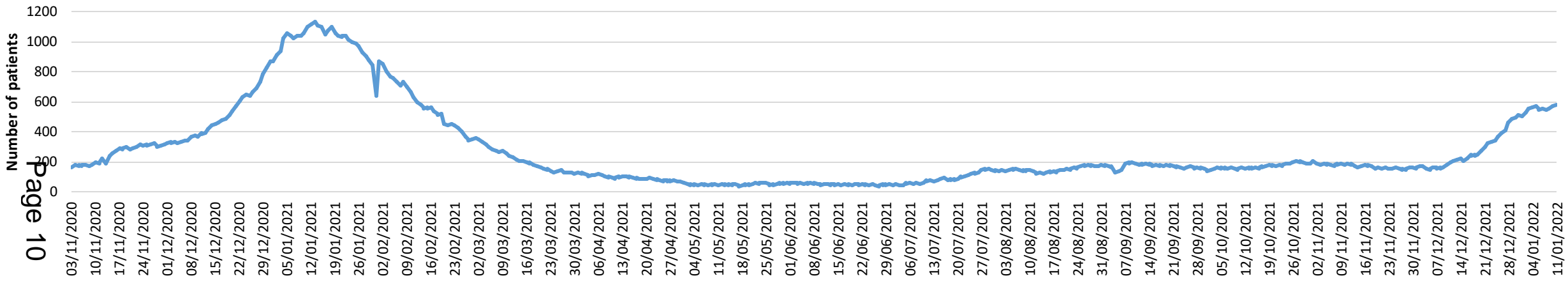
COVID-19 hospital indicators for South West London

Source: Coronavirus (COVID-19) in the UK (<https://coronavirus.data.gov.uk/>)

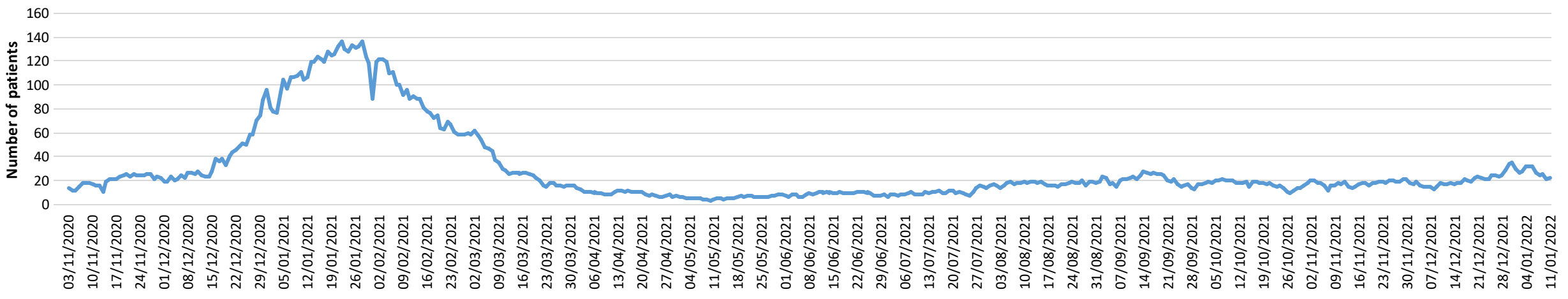
Reporting frequency: daily but inconsistent updates

Key message: The number of confirmed COVID-19 inpatients has increased in recent weeks while those on ventilation in South West London has reduced slightly

Confirmed COVID-19 inpatients in Southwest London NHS trust hospitals (Daily count of confirmed COVID-19 patients in hospital at 8am)



Confirmed number of COVID-19 inpatients in mechanical ventilator beds in Southwest London NHS trusts

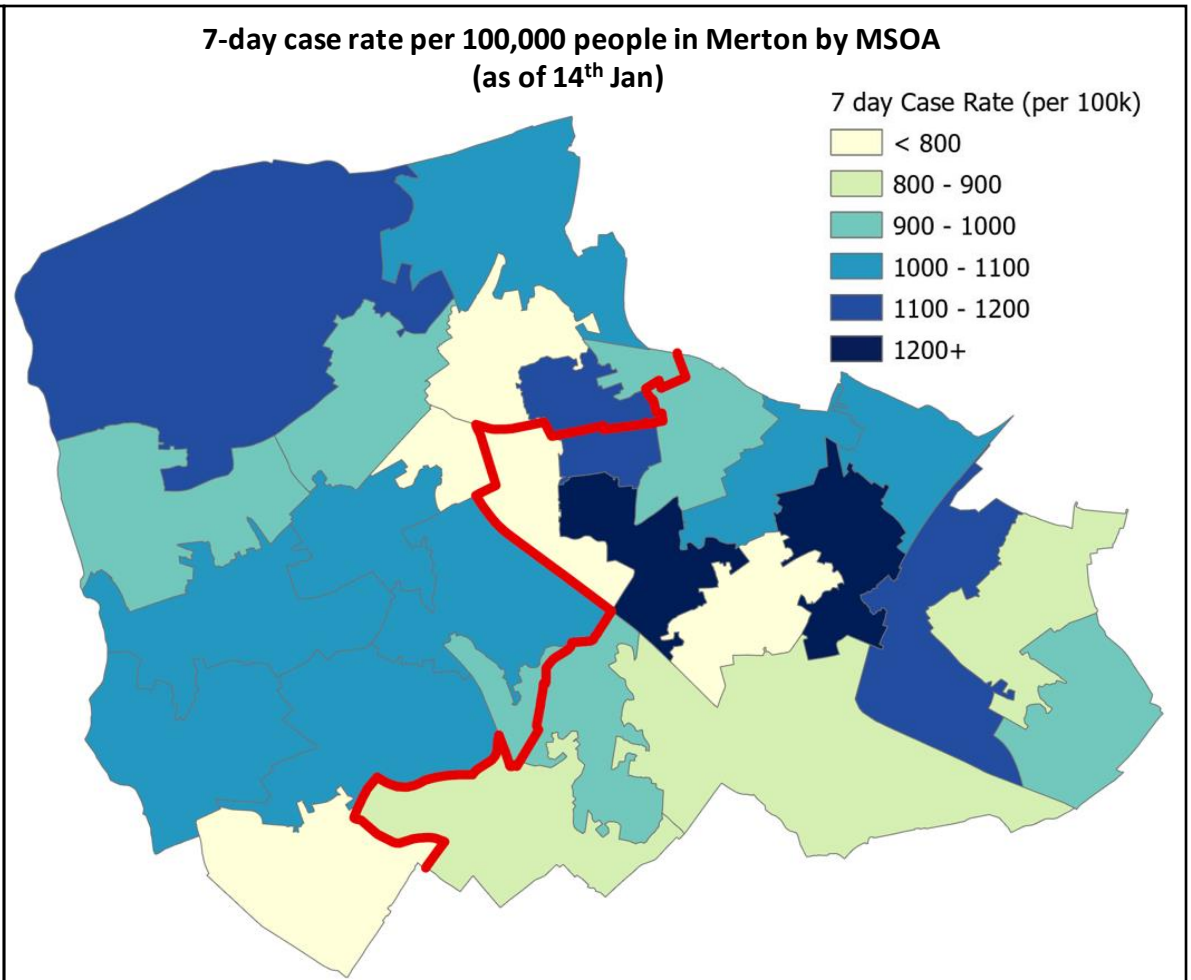
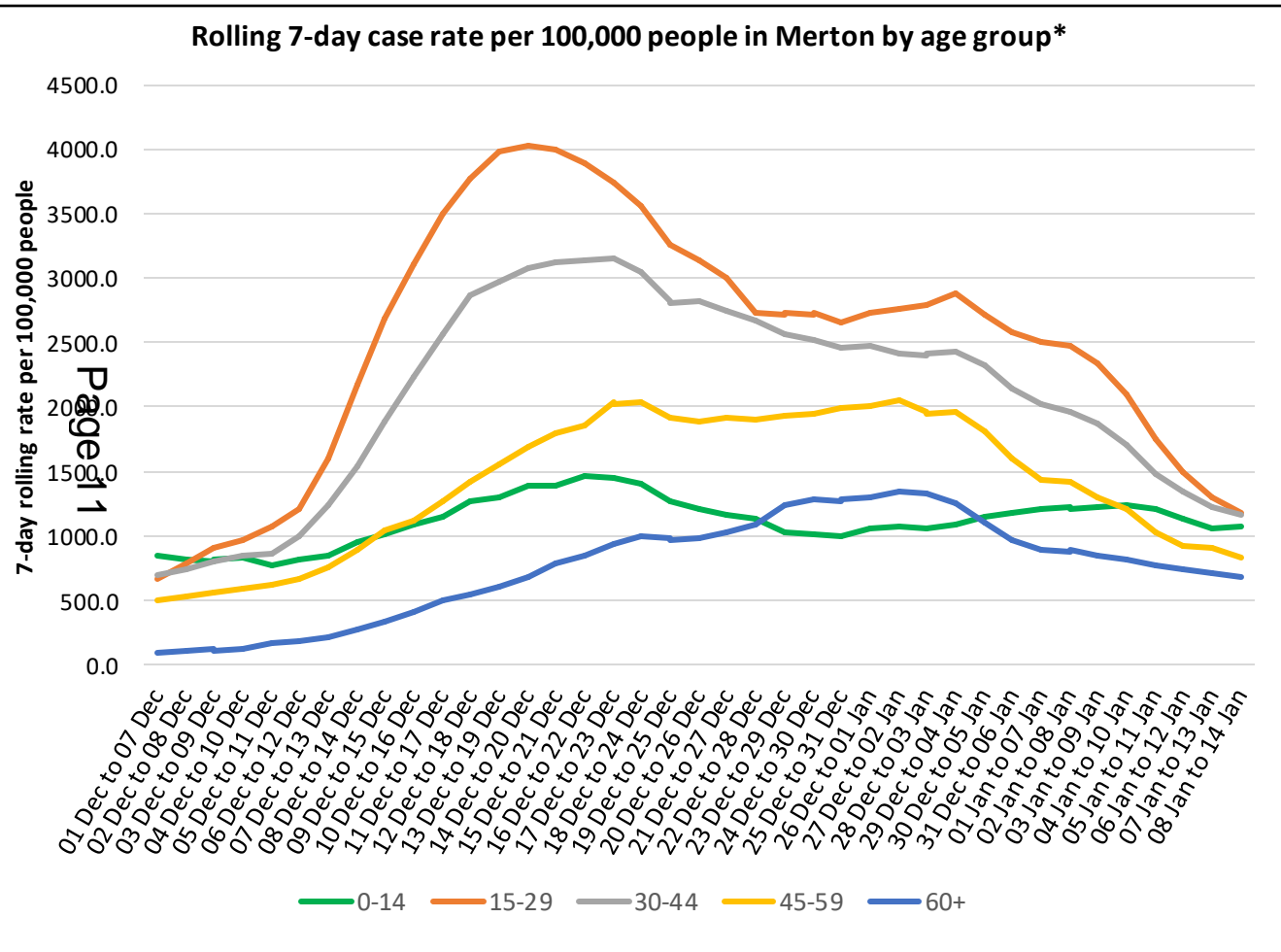


COVID-19 cases in Merton by age and geography

Source: Coronavirus (COVID-19) in the UK (<https://coronavirus.data.gov.uk/>)

Reporting frequency: daily

Key message: case rates are decreasing in all ages apart from 0-14 years and are slightly higher in east versus west Merton

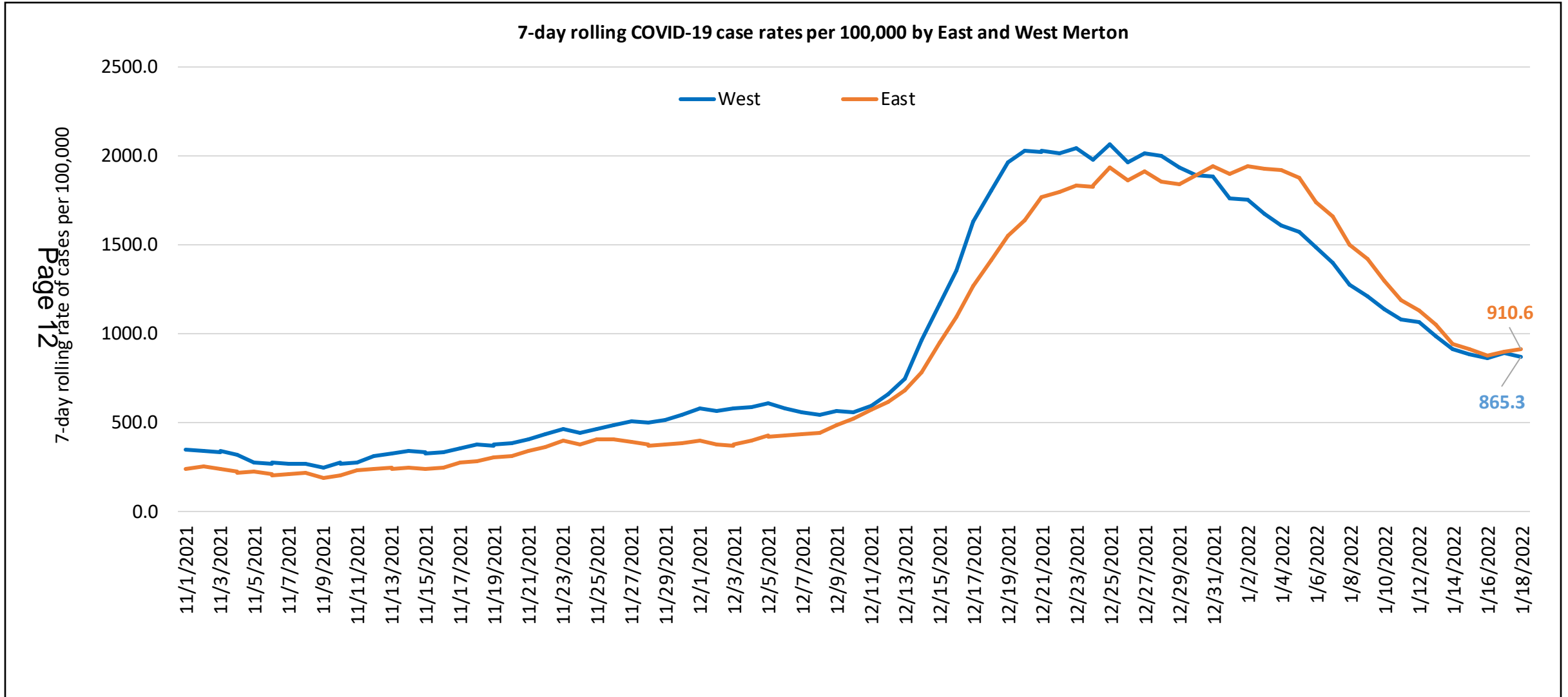


*Rolling 7-day case rate per 100,000 is calculated using the number of people testing positive (source: Coronavirus (COVID-19) in the UK; <https://coronavirus.data.gov.uk/>) and Merton population estimates (source: GLA Housing-led identified capacity model estimates for 2021).

COVID-19 7-day case rates in East and West Merton

Source: UKHSA Covid-19 Situational Awareness Explorer (**SENSITIVE**)

Reporting frequency: daily



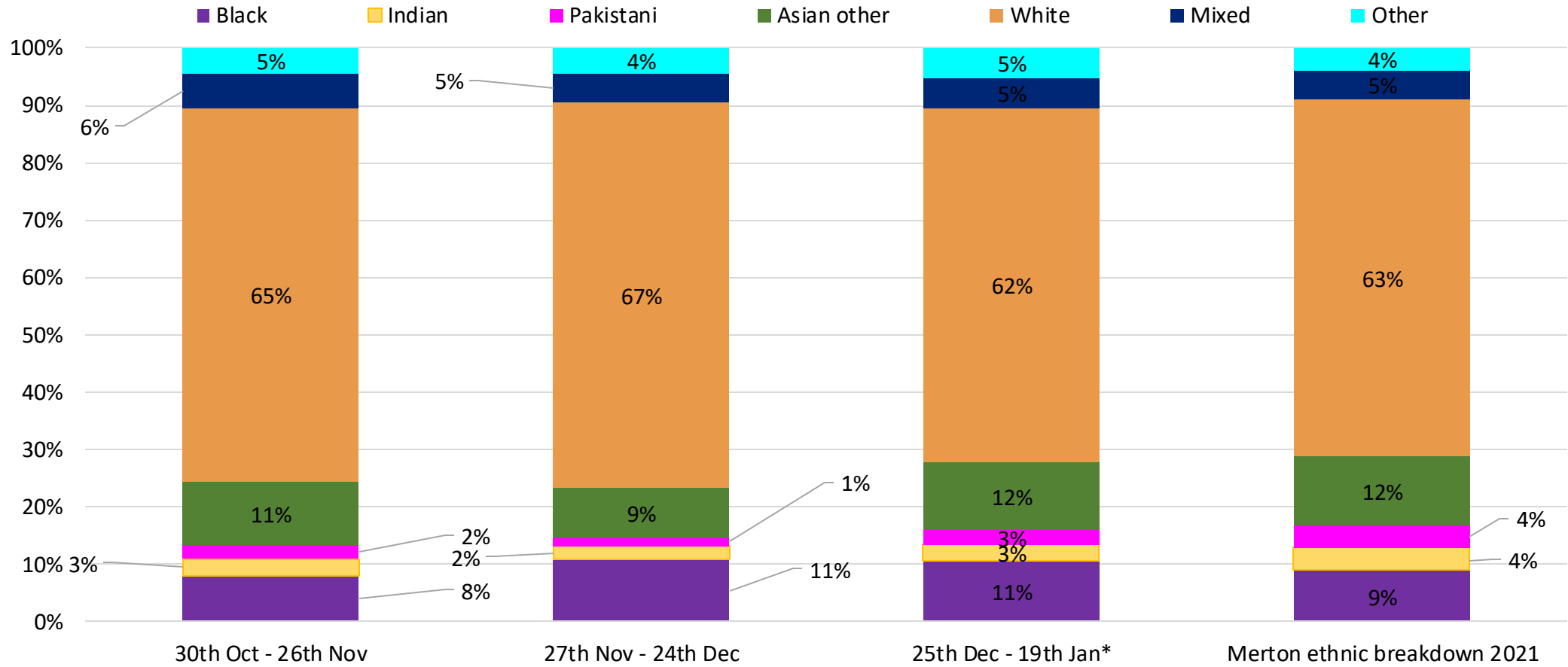
COVID-19 cases in Merton by ethnicity

Source: UKHSA Covid-19 Situational Awareness Explorer (**SENSITIVE**)

Reporting frequency: daily

Page 13

Pillar 2 COVID-19 cases in Merton residents - by ethnicity compared to Merton ethnic profile over 4 week periods (30th Oct 21 – 19th Jan 22)



*Please note that the latest period (25th Dec – 19th Jan) is not a complete 4 week period due to data not being available as yet.

COVID case rates by age group in Children and Young People in Merton (residents)

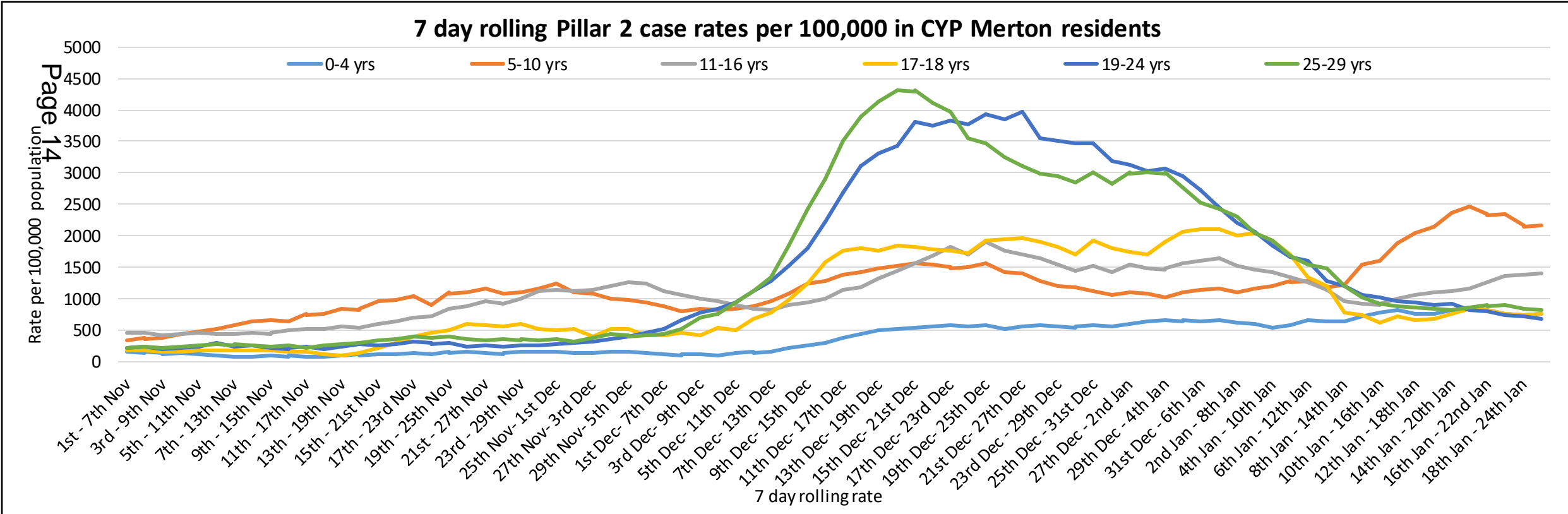
Source: UKHSA Covid-19 Situational Awareness Explorer and GLA population estimates (**SENSITIVE**)

Key Messages

- In recent weeks rates have increased in age groups between 0-18 years old, in contrast, rates have recently decreased for age groups between 19-29 years old.
- Recently, the highest rates can be seen in 5-10 and 11-16 year olds compared to other CYP age groups.

Case rates per 100,000 population in CYP specific age groups in Merton (numbers in brackets)

Week ending	0-4 yrs	5-10 yrs	11-16 yrs	17-18 yrs	19-24 yrs	25-29 yrs
22/01/2022	807.0 (110)	2341.5 (385)	1266.0 (203)	823.9 (37)	788.8 (83)	891.3 (129)
15/01/2022	711.7 (97)	1532.6 (252)	916.8 (147)	734.8 (33)	1064.4 (112)	1022.5 (148)
08/01/2022	609.0 (83)	1106.9 (182)	1521.7 (244)	2004.0 (90)	2204.8 (232)	2307.6 (334)



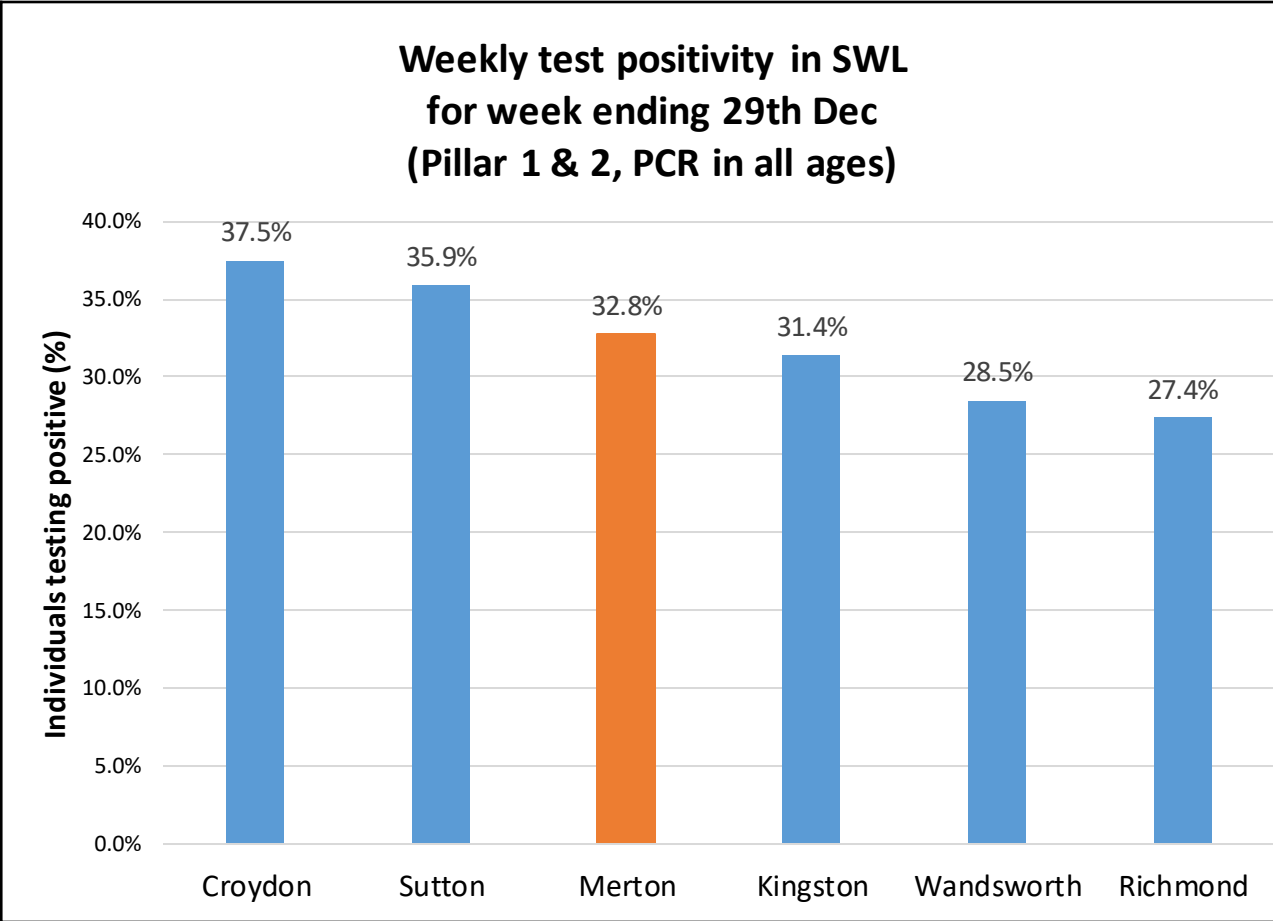
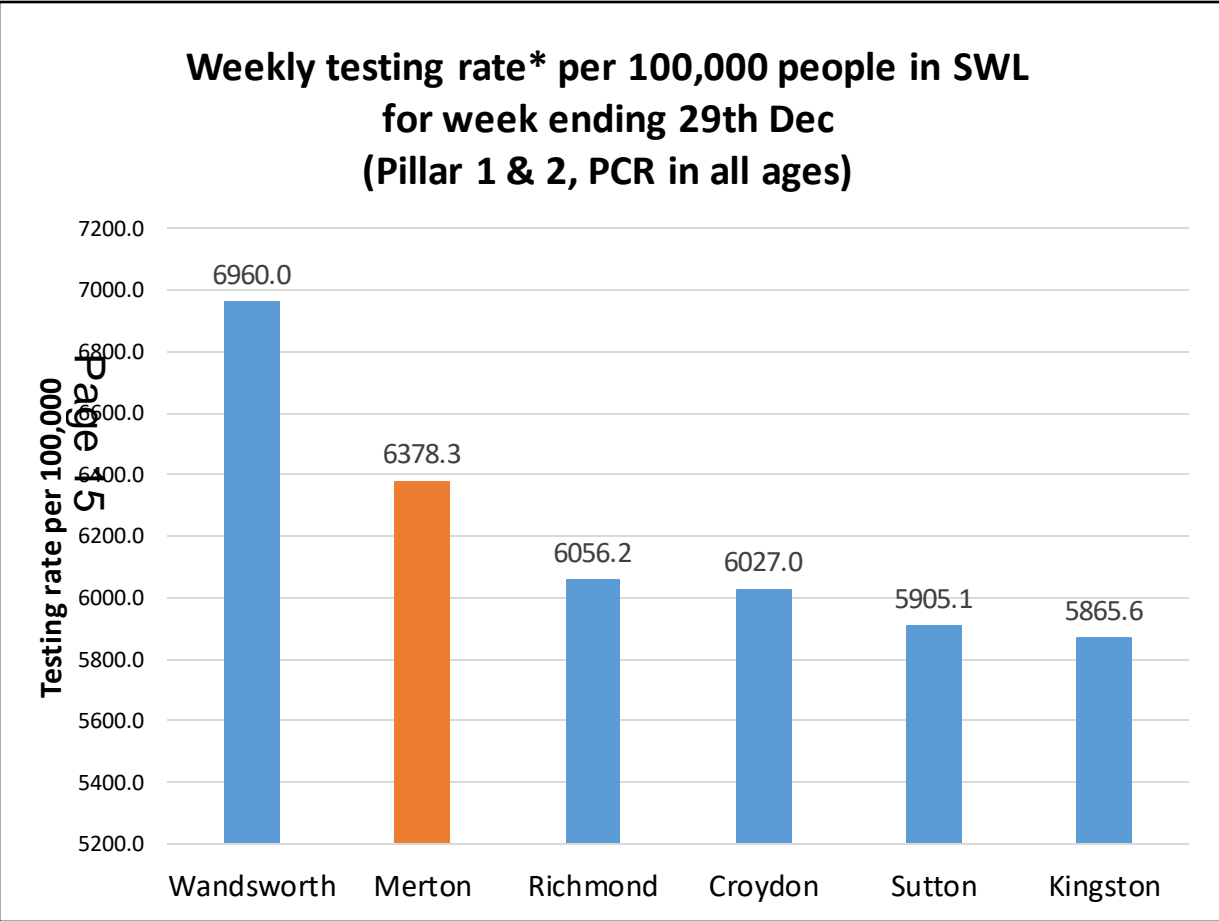
Rolling 7-day case rate per 100,000 is calculated using the number of people testing positive (source: UKHSA Covid-19 Situational Awareness Explorer and Merton population estimates (source: GLA Housing-led identified capacity model estimates for 2021).

COVID-19 testing & positivity in Merton compared to SW London boroughs

Source: UKHSA Weekly statistics for NHS Test and Trace (<https://www.gov.uk/government/collections/nhs-test-and-trace-statistics-england-weekly-reports>)

Reporting frequency: weekly

Key message: Merton has the 2nd highest testing rate per 100,000 people and 3rd highest positivity compared to SWL boroughs



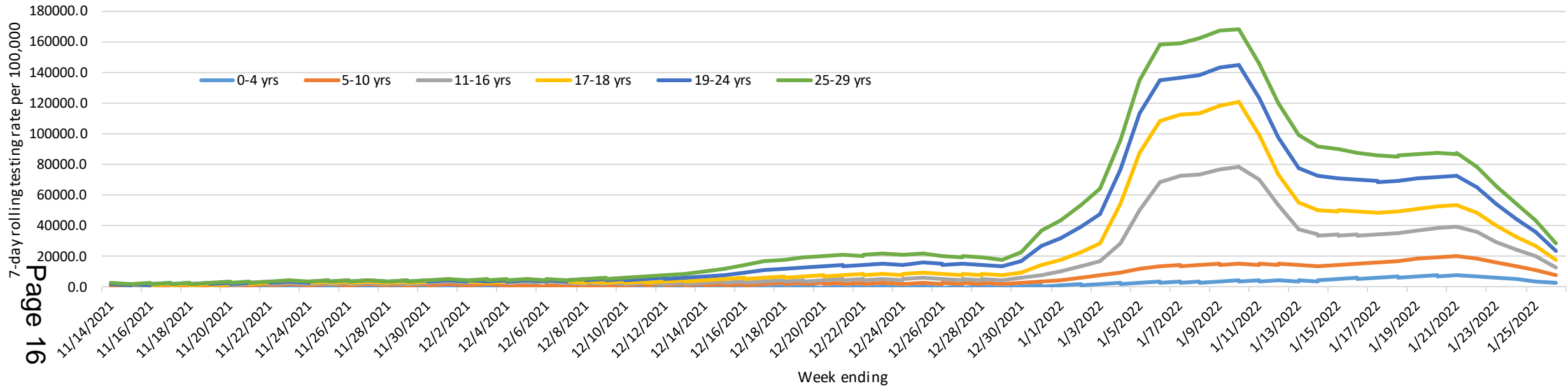
*Testing rate per 100,000 is calculated using the number of people tested (source: UKHSA weekly statistics for NHS Test and Trace report) and SWL borough population estimates (source: GLA Housing-led identified capacity model estimates for 2021).

Please note both the test rates and positivity presented on this slide are person-based, not test-based (if someone had multiple tests or tested positive multiple times in a reporting week they are only counted once).

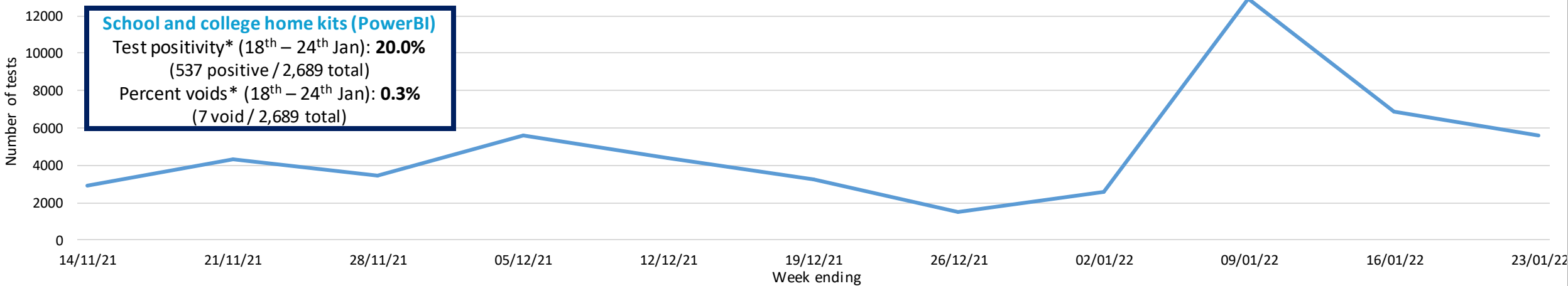
COVID testing rates and LFD tests in Children and Young People in Merton (residents)

Source: UKHSA Covid-19 Situational Awareness Explorer and GLA population estimates

7-day rolling COVID-19 testing rates (PCR) per 100,000 in CYP Merton residents



Weekly number of school and college LFD tests completed by Merton residents



Testing rate per 100,000 is calculated using the number of tests (source: UKHSA Covid-19 Situational Awareness Explorer) and Merton population estimates (source: GLA Housing-led identified capacity model estimates for 2021). Individuals may have multiple tests.

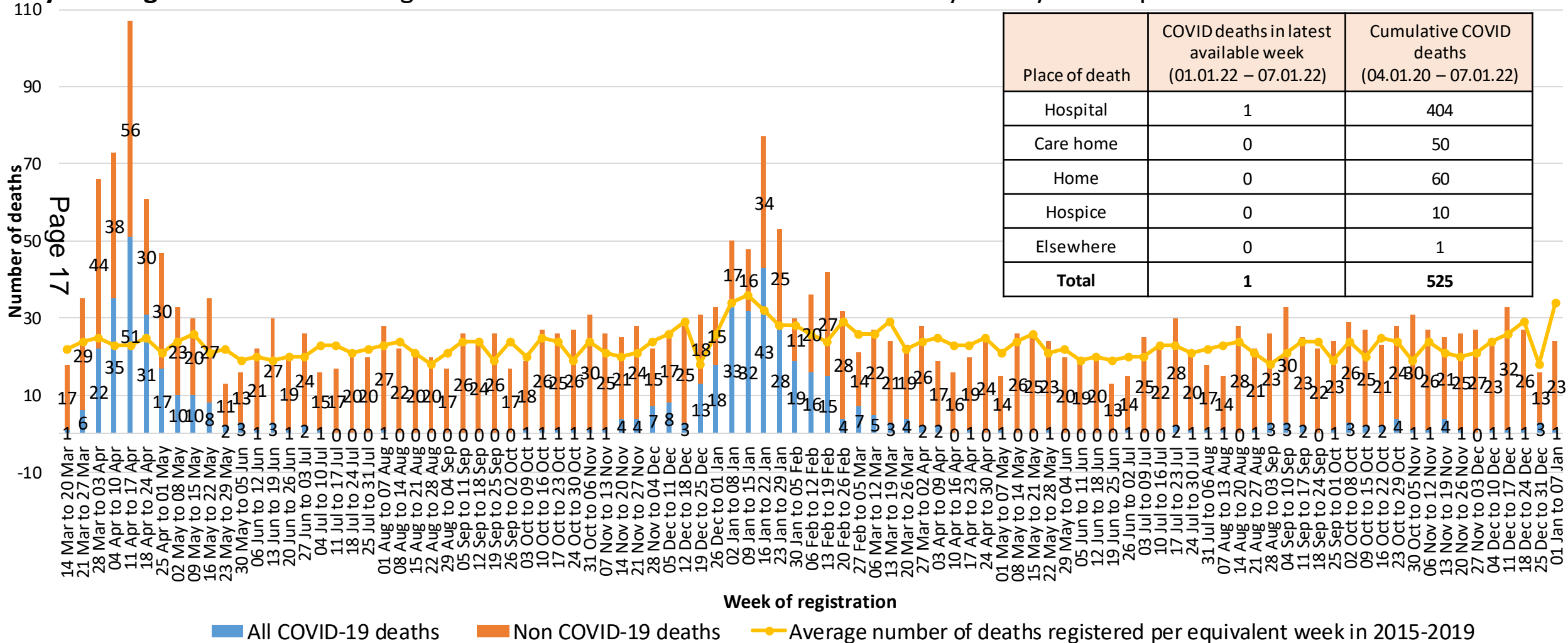
Number of deaths of Merton residents by week of registration

Source: ONS death registrations and occurrences by local authority and health board

<https://www.ons.gov.uk/peoplepopulationandcommunity/healthandsocialcare/causesofdeath/datasets/deathregistrationsandoccurrencesbylocalauthorityandhealthboard>

Reporting frequency: Weekly

Key message: The number of registered deaths in Merton has remained fairly steady since April 2021

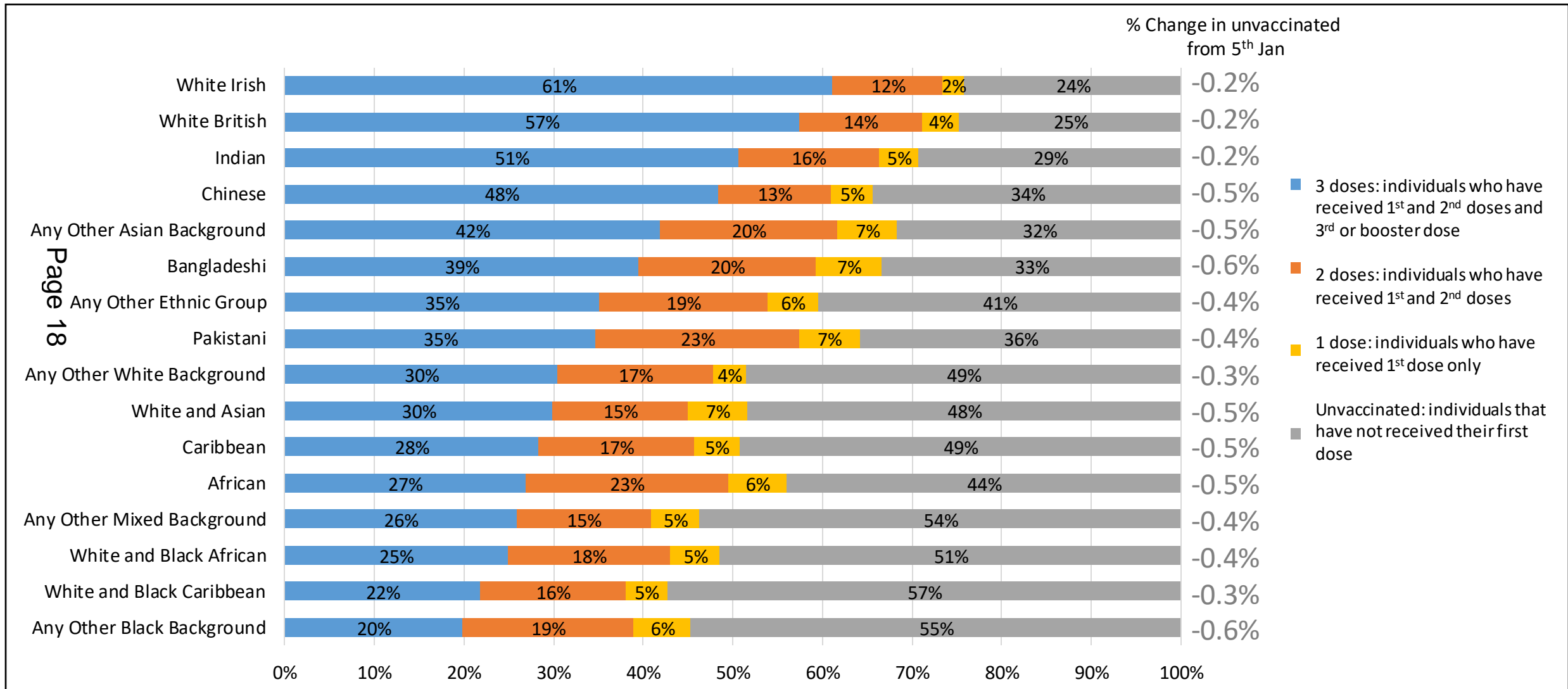


COVID-19 vaccination uptake by ethnicity

Source: UKHSA Covid-19 Situational Awareness Explorer

Reporting frequency: Daily

Key message: The unvaccinated population continues to decrease across all ethnic groups



Page 18

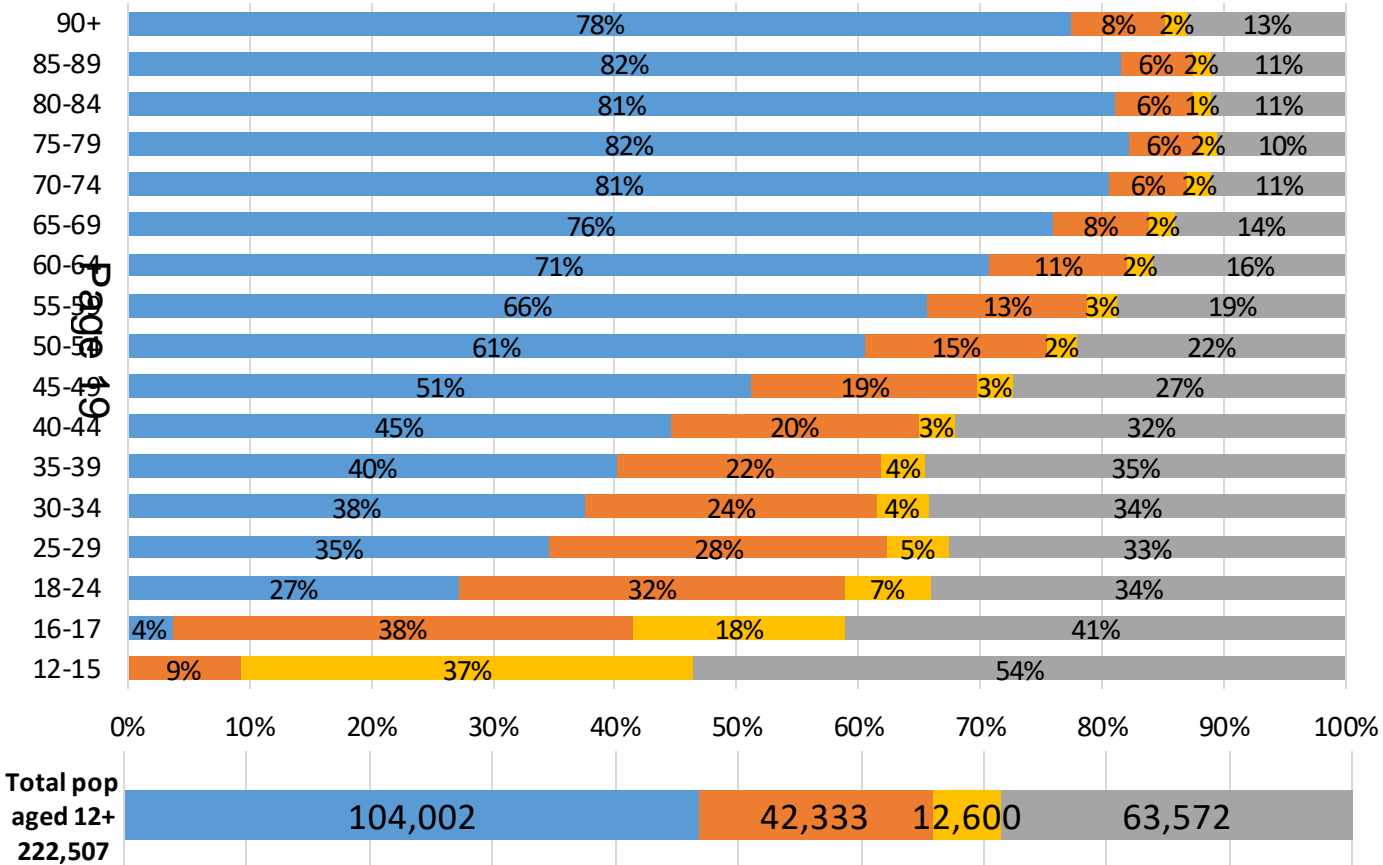
COVID-19 vaccination uptake by age group and geography

Source: Coronavirus (COVID-19) in the UK (<https://coronavirus.data.gov.uk/>) and NHS England COVID-19 vaccinations report (<https://www.england.nhs.uk/statistics/statistical-work-areas/covid-19-vaccinations/>)
 Reporting frequency: Weekly

Key message: Vaccination uptake is lowest among younger age groups

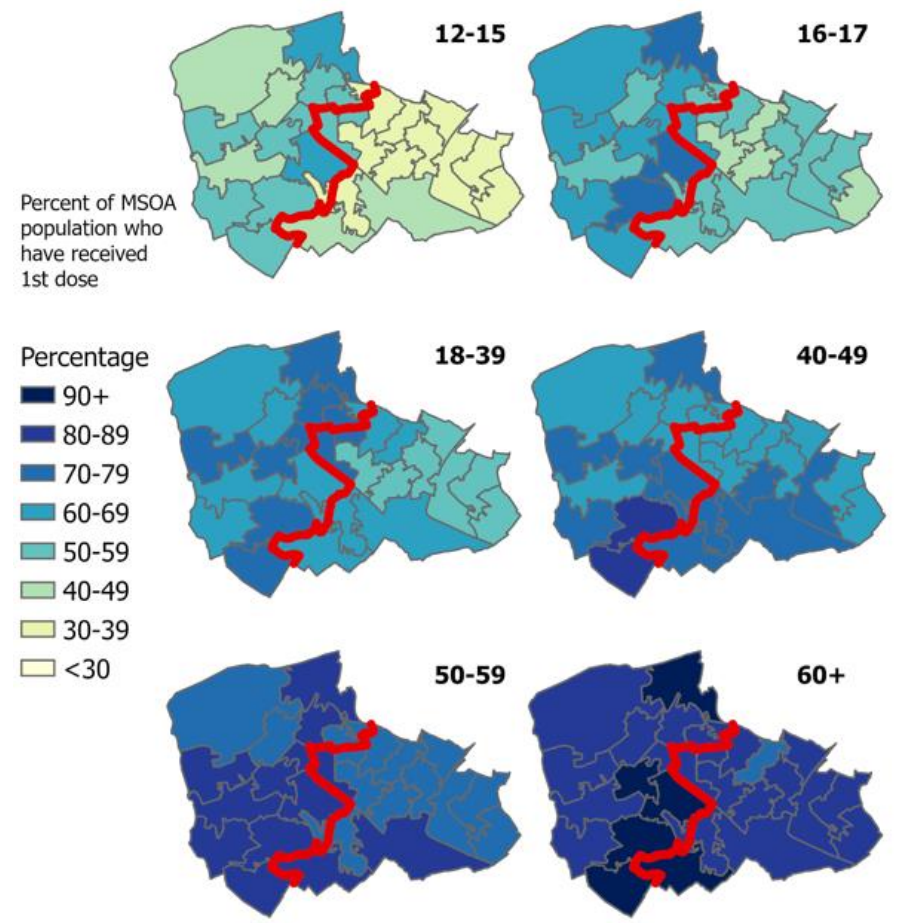
Vaccine uptake by age band among Merton residents* (as of 17th Jan)

3 doses 2 doses 1 dose Unvaccinated



*Data using NIMS population as denominator. See previous slide for more details on doses

Percentage of Merton residents by age group and MSOA that have received at least the 1st dose of Covid-19 vaccination



Schools overview in Merton

Schools Spring term:

- As of 27th January, masks are no longer required in communal areas in schools however masks can be advised in outbreak situations and continue to be recommended in dedicated school transport, some public transport and enclosed/overcrowded spaces.
- As with the wider population, social isolation rules for children and young people who are symptomatic / test positive have been reduced to 5 full days – provided negative lateral flow tests on day 5 and 6 and no temperature.
- The newly established Covid-19 Resilience Programme which offers training to Covid-19 leads in school and early year settings have delivered a number of workshops and training – the feedback on this has been really positive from early years/school staff.

Outbreaks

- The first few weeks of the New Year saw a significant increase in outbreaks in schools, numbers have been especially high in primary schools. Number of outbreaks appear to be higher this term compared to last term. Schools are facing pressures due to staff absences because of self-isolation requirements. Public health team continues to work closely with schools to manage the outbreaks.

Vaccination

- 5-11 year olds at high risk: The roll out of this programme will start from the week commencing 31st January. Searches of medical records have identified 400 children who are eligible across South West London.
- Healthy 12-17 year olds are recommended to have 2 doses of Covid-19 vaccination – roll out of the second dose for 12-15 year olds commenced this month (January). Second doses will be offered 12 weeks after the first dose or 12 weeks from testing positive for Covid-19.
- Booster vaccination for 16-17 year olds has been available from 17th January and will be offered 12 weeks after 2nd dose.
- Healthy 12-15 year olds living with a severely immunosuppressed household contact: Recommended to have first and second doses of the Covid-19 vaccine 8 weeks apart. They are also recommended to have boosters.
- 12+ year old at high risk: Recommended to have first, second and third dose and also the booster vaccine. Booster vaccination can be offered 3 months after third dose.